

## INSTALLATION MANUAL



## Table of Contents

---

1. INTRODUCTION .....	2
2. RECOMMENDATIONS .....	2
3. CONNECTION SCHEME OF THE MODULE .....	4
4. CODING .....	5
5. BASIC TECHNICAL PARAMETERS .....	6
6. COMPONENTS OF THE SET .....	6

## 1. INTRODUCTION

JAUX\_BT-02 module with bluetooth function for AUDI CONCERT systems. Using the built-in Bluetooth module device allows to wireless audio playback from portable devices. Device is equipped with additional line input, which gives a possibility to listen of sound using the AUX connector. The module fully integrates with the CAN system. Plug and Play installation.

### ***important:***

*If the car is equipped with a factory-made AMI module and we want to keep it functionality and at the same time connect additional devices (JRDAB-02 or JAUX\_BT-02), use the CAN-JSW-02 switch available in our offer.*

## 2. RECOMMENDATIONS

### **Copyright**

All assembly and operating instructions are protected by copyright. Distributing documentation via print or online media is only allowed with the prior consent of JUNA electronics.

### **Important**

Please read installation manual very careful and keep it in right way. During installation, pay attention to all relevant aspects related to safety of installation and use of the device.

The priority during the design and production of all devices by JUNA electronics company is security and service comfort. It has been achieved by applying the modern techniques of design and production processes of electronic devices.

Module should be installed in technical workshops by qualified personnel or by people who have experience in this type of installations. Installation of devices by not qualification people can cause injury to persons or damage to property.

It is recommended keep to the general safety rules and pay attention for any threat that can cause of damage to the vehicle.

## 2.1 RECOMMENDATIONS

We advice to mount device in safety place, where it is not exposed for moisture, water or too high temperatures.

Device should not be installed in places where it could difficult safe driving or operating efficiency of other units installed in vehicle.

The devices can be connected only to 12V. Modules can't be used in vehicles with 24V and higher voltage.

Please note that most of our devices are based on software that may require an update. That's why you should always mount the device in easily available place in the vehicle.

In some countries it may be necessary to check the legal provisions before installation and startup of the device. In the interest of high quality and development of our products, JUNA Electronics reserves the right to make technical changes.

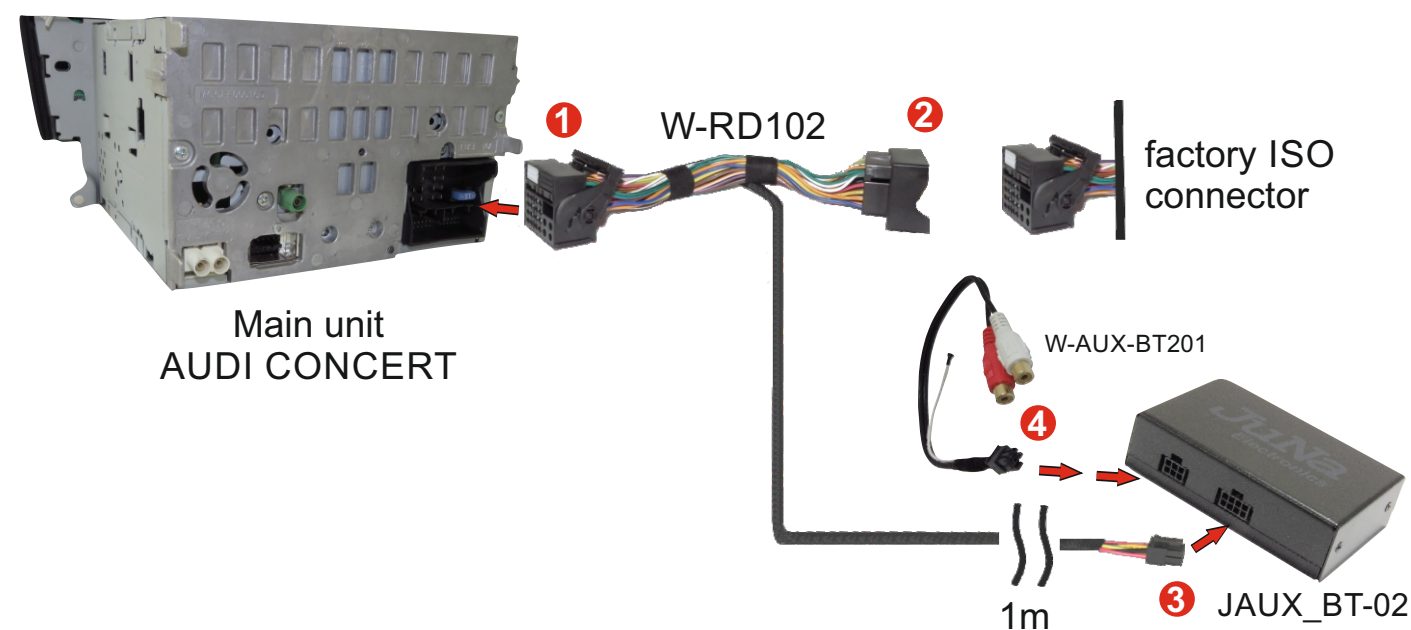
In the case of a warranty claim, the device should be sent back to the seller in original packaging with a detailed description of the problem with attached purchase invoice.

Warranty claims as well as exploitation rights expire due:

- A) Not authorized changes in devices or accessories, which have not been approved or have not been provided by the manufacturer or his partners.
- B) Opening the device's box
- C) Yourself repair the device
- D) Improper use / improper operation of the device
- E) Mechanical damage
- F) Flooding with water or other liquids

### 3. CONNECTION SCHEME OF THE MODULE

1. Switch off the ignition and vehicle radio
2. Disconnect the original ISO connector from the radio
3. Connect the W-RD102 ISO cable to the car radio ①
4. Connect the factory ISO connector plug to the W-RD102 socket ②
5. Connect the plug (8pin) of the cable W-RD102 to the module JAUX\_BT-02 ③
6. Connect the W-AUX-BT201 cable to the JAUX\_BT201 module ④
7. Turn on the ignition switch and start the vehicle radio



**INFORMATION:**

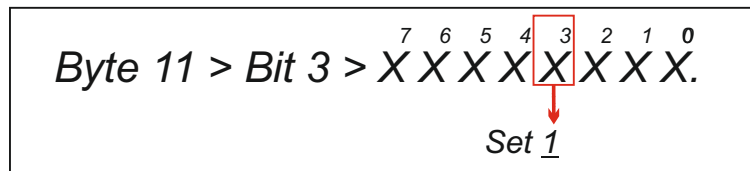
If (AUX/Bluetooth) option doesn't appear in the Source menu after connection of JAUX\_BT-02 module then AMI platform must be activated via OBD connector  
(see *item 4/p.4*)

**INFORMATION:**

If (AUX/Bluetooth) option doesn't appear in the Source menu after connection of JAUX\_BT-02 module then AMI platform must be activated via OBD connector  
(see *item 4/p.4*)

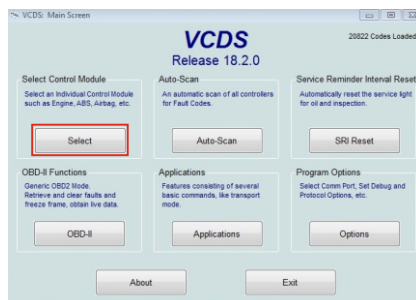
## 4. CODING

If Audi Music Interface [AMI] wasn't pre-installed in the car there might be a need to activate function using VAG, VCDS or other diagnostic program.

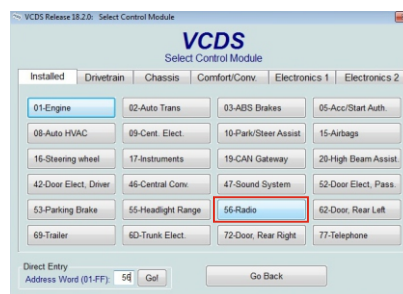


Long coding in the CONCERT unit (56-Radio module)

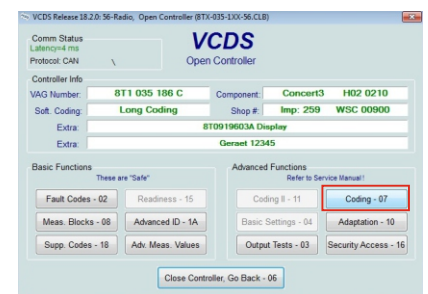
Below is an example of how to encode with the VCDS program.



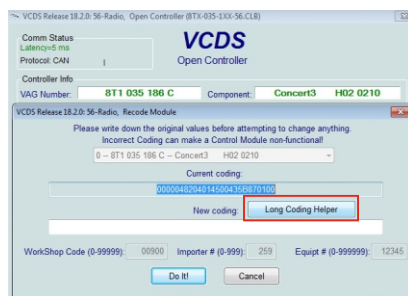
1. Option Control Mode



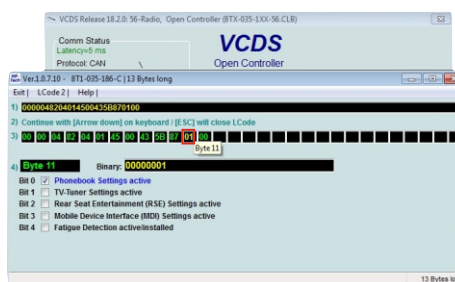
2. Option 56-Radio



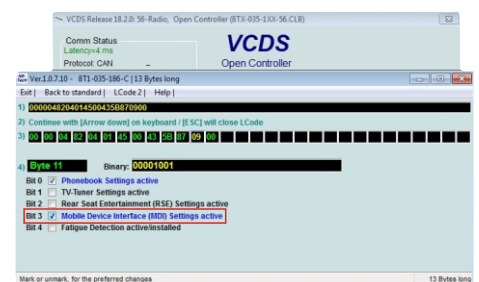
3. Option Coding



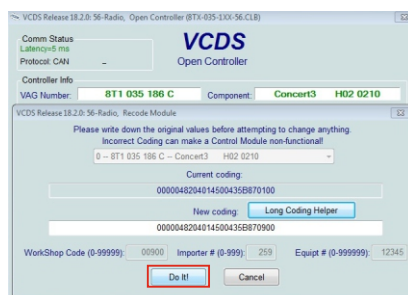
4. Option Long Coding



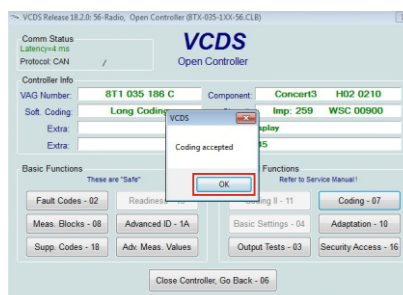
5. We choose Byte 11



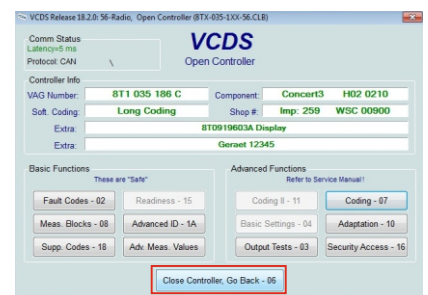
6. In Byte 11, mark Bit 3



7. Confirm with the Do It button



8. We confirm the correctly made process



9. We close the coding process

For the coding process to be fully effective, please disable the program Diagnostic (**Fig. 9. Close the coding process**), Switch off and then on again.

## 5. BASIC TECHNICAL PARAMETERS

- |   |                      |
|---|----------------------|
| 1. Power supply voltage                       | - 12V                |
| 2. Power consumption with active Bluetooth    | - 49mA               |
| 3. Power consumption without active Bluetooth | - 38mA               |
| 4. Resting current                            | - 0mA                |
| 5. Communication and control                  | - CAN bus            |
| 6. Housing                                    | - Metal              |
| 7. Dimensions                                 | - 62mm x 92mm x 25mm |
| 8. Weight                                     | - 153g               |

## 6. ELEMENTS OF THE SET

1. AUX/Bluetooth module [JAUX\_BT-02]
2. Connection cables [W-RD102]
3. Bunch of socket RCA+Antena [W-AUX-BT201]

